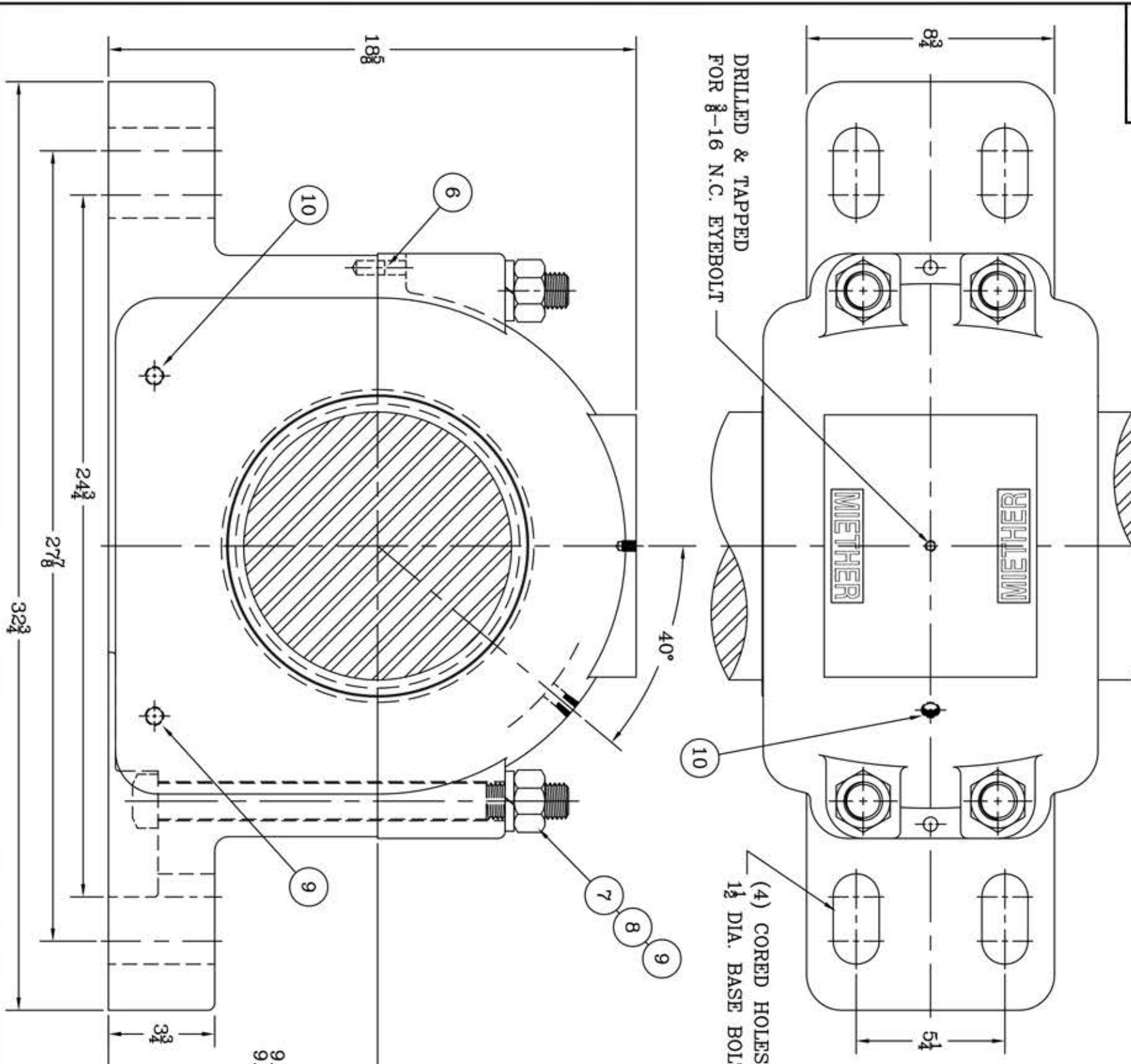
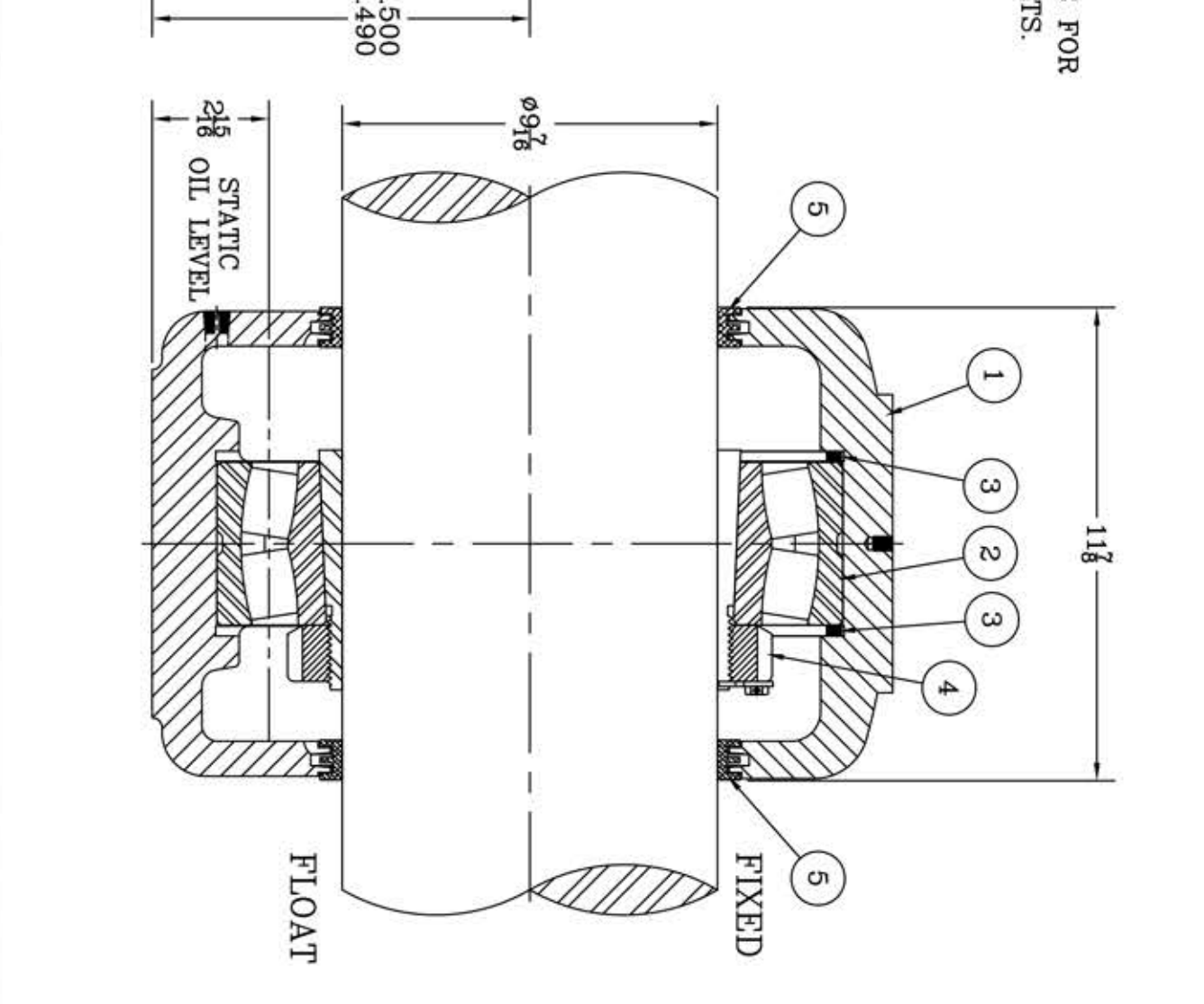


This drawing is the sole property of Miether Bearing Products and contains confidential and proprietary information. It is being provided to you for your use and may not be disclosed to any third party or used for any other purpose without Miether's prior written consent. The [materials] must be returned to the Company upon its demand. Your acceptance of these materials constitutes your acceptance of the foregoing terms.

C-19866



ITEM	DESCRIPTION	DETAIL	REQUIRED
1	HOUSING SAF-052 K 09-07	C-11845-R	1 1
2	SPHERICAL ROLLER BEARING	23052K/W-33	1 1
3	STABILIZING RING SR-8898	A-15856	2 0
4	ADAPTER SNP-3052 09-07	24267	1 1
5	TRIPLE SEAL RING LER 178-1	A-11844	2 2
6	DOWEL	$\phi 1/2$ x 1" LONG	2 2
7	CAP BOLT SQUARE HEAD	1 1/4-7 NC x 1 1/2" LONG	4 4
8	CAP BOLT HEX. NUT	1 1/4-7 NC	4 4
9	LOCKWASHER	1 1/4 SPLIT MED.	4 4
10	PIPE PLUG	3/8- NPT	3 3



REDRAWN FOR CONFORMITY  
RWB per KAB  
4-21-04

REVISIONS

SYMBOL	DESCRIPTION	DATE
C	REVISION	16
D	REVISION	32
E	REVISION	63
F	REVISION	125
G	REVISION	250
J	REVISION	500
K	REVISION	1000

TOLERANCE: UNLESS OTHERWISE SPECIFIED  
FRACTIONS  $\pm 1/32$  ANGLES  $\pm 0^\circ 30'$   
DECIMALS  $\pm .005$  WELD  $\pm 1/16$   
CASTING  $\pm 1/16$

A.I.S.I. STANDARD FINISHES

AN ALCO INDUSTRIES COMPANY  
BEARING PRODUCTS  
ODESSA, TX. USA

SAF 23052 K 09-07	ASSEMBLY DRAWING
SCALE 1 = 3	ASSEMBLY NO.
DRAWN BAB	DATE 3-1-88
DATE 3-1-88	DRAWING NO. C-19866
CHK:	